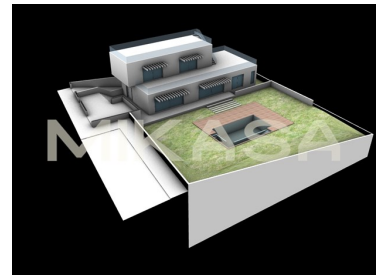
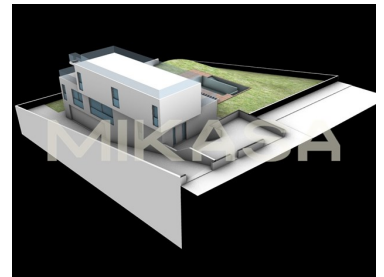




## Aljezur - Land



240

Area (m²)



490

Land Area (m²)

199 000 €

(EUR €)

## Land in Aljezur

L 121

Urban land of 490m2, with a gross building area of 240m2. This plot is in the active Urbanization of Espartal, which is nestled between the popular beaches of Monte Clerigo and Amoreira and in the heart of the Costa Vicentina Natural Park.

For those seeking more outdoor space, there has been a PIP approved to use this land for the pool and garden area for the neighboring plot which has an approved project.

Supermarkets, cafes, and restaurants are only a few minutes' drive by car, and the village of Aljezur is a ten-minute drive. In Aljezur you can find schools, shops, restaurants, medical services, a pharmacy, and a daily market.

Book your visit today!



**Kate Warren**

Real Estate Consultant

+351 961 100 477 <sup>2</sup> · +351 282 106 989 <sup>1</sup>

kate.warren@mikasainvest.pt

T +351 282 106 989 <sup>1</sup> · T +351 935 632 925 <sup>2</sup> · E [info@mikasainvest.pt](mailto:info@mikasainvest.pt)

Rua Vitor Costa e Silva, lote 30B, Loja E  
AMI 21077

<sup>1</sup> (Call to national fixed network) | <sup>2</sup> (Call to national mobile network)



## Property Features

- Views: Sea views, Beach view
- Energetic certification: Exempt
- Quiet Location



**Kate Warren**

Real Estate Consultant

+351 961 100 477 <sup>2</sup> · +351 282 106 989 <sup>1</sup>

kate.warren@mikasainvest.pt

**T +351 282 106 989 <sup>1</sup> · T +351 935 632 925 <sup>2</sup> · E info@mikasainvest.pt**

**Rua Vitor Costa e Silva, lote 30B, Loja E  
AMI 21077**

<sup>1</sup> (Call to national fixed network) | <sup>2</sup> (Call to national mobile network)