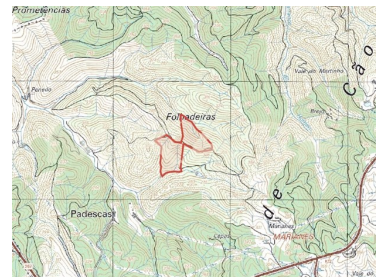
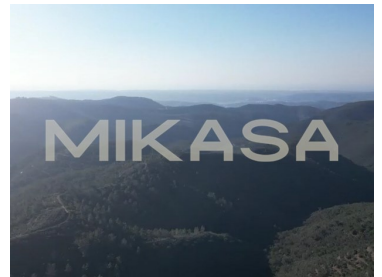





Marmeleite - Land



 **97250**

Land Area (m²)

N/A
CLASSE
ENERGÉTICA

99 000 €

(EUR €)

Land in Padescas

T112

It is a land of great natural beauty, with a total area of 97,250 m². It is the perfect place for the cultivation of eucalyptus, pine and strawberry trees. On top of that, there's a lovely vegetable garden waiting to be explored on this stunning piece of land.

The view is truly awe-inspiring, offering a panoramic view that will leave you breathless. In addition, the land benefits from excellent road access.

The land is isolated, without many houses in the surrounding area, being an area of National Ecological Reserve.

Conveniently located, just a ten minute drive from the charming towns of Aljezur and Marmeleite,



Kate Warren

Real Estate Consultant

+351 961 100 477 ² · +351 282 106 989 ¹

kate.warren@mikasainvest.pt

T +351 282 106 989 ¹ · T +351 935 632 925 ² · E info@mikasainvest.pt

**Rua Vitor Costa e Silva, lote 30B, Loja E
AMI 21077**

¹ (Call to national fixed network) | ² (Call to national mobile network)



you'll find an abundance of shops, restaurants and all other essential amenities. Whether you're looking for local delicacies, unique souvenirs, or simply want to explore the vibrant local culture, these nearby towns offer a delicious variety of options.

Come explore this land with me!

Property Features

- Views: Countryside views, Mountain views
- Energetic certification: Exempt



Kate Warren

Real Estate Consultant

+351 961 100 477 ² · +351 282 106 989 ¹

kate.warren@mikasainvest.pt

T +351 282 106 989 ¹ · T +351 935 632 925 ² · E info@mikasainvest.pt

**Rua Vitor Costa e Silva, lote 30B, Loja E
AMI 21077**

¹ (Call to national fixed network) | ² (Call to national mobile network)